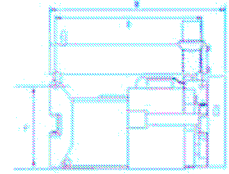
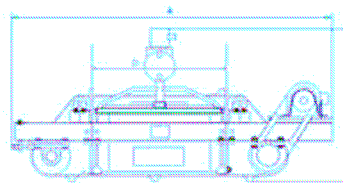
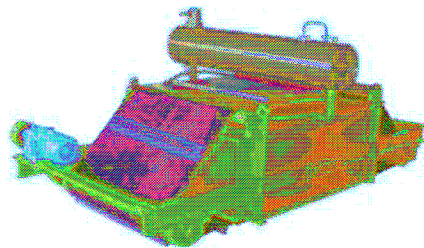


Main Technical Parameters

Model	Item Parameter	Cooling Style	Belt Width Adaptive mm	Suspension Height Rated mm	Magnetic Intensity at SHR mT	Excitation Power kw	Outline Dimensions mm						Weight kg
							A	B	C	D	E	F	
RCDE-6		Oil-cooling	650	200	70	3.2	1070	900	925	650	720	432	900
RCDE-8			800	250	70	4.3	1126	1050	1107	620	716	551	1400
RCDE-10			1000	300	70	5.7	1250	1200	1160	970	850	596	2100
RCDE-12			1200	350	70	7.0	1450	1300	1201	1070	1050	700	2700
RCDE-14			1400	400	70	8.7	1670	1500	1250	1220	1250	786	3400
RCDE-16			1600	450	70	11.5	1910	1600	1400	1200	1430	910	5000



Model	Item Parameter	Cooling Style	Belt Width Adaptive mm	Suspension Height Rated mm	Magnetic Intensity at SHR mT	Motor Power kw	Excitation Power kw	Outline Dimensions mm						Weight kg
								A	B	C	D	E	F	
RCDF-6		Oil-cooling	650	200	70	1.5	3.2	2275	1081	1048	922	854	549	1200
RCDF-8			800	250	70	2.2	4.3	2400	1473	1120	1072	1090	637	2000
RCDF-10			1000	300	70	3.0	5.7	2706	1564	1240	1130	1253	694	2700
RCDF-12			1200	350	70	4.0	7.0	3190	1718	1391	1330	1440	805	3400
RCDF-14			1400	400	70	4.0	8.7	3430	1918	1366	1530	1693	820	4000
RCDF-16			1600	450	70	5.5	11.5	3550	2118	1465	1730	1923	895	6300

Note that 70 mT (700 Gauss) at recommended suspension height is Longi standard. Higher performance intensity can be offered where required for difficult applications. We offer expert guidance on strength required for specific applications.